



# **User Guide**

**Stock Take ( Outlet ) Solution**

**Spectacle Hut**

## Content Page

### **Solution for Configuration of Wireless Settings for PDA palm computer:**

1. Accessing “Wireless Network” section .....Page 4
2. Accessing “Wi-Fi” connection section .....Page 4
3. Accessing Outlet's wireless connection .....Page 5
4. Checking Outlet's Network Name .....Page 5
5. Configuring Network Authentication .....Page 6

### **Solution for Configuration of the DataWedge Settings for PDA palm computer:**

6. Accessing “Programs” section .....Page 7
7. Accessing “File Explorer” section .....Page 8
8. Accessing “DataWedge” section .....Page 9
9. Open up “Menu” list .....Page 10
10. Selecting “Decoders” option .....Page 10
11. Check for unchecked codes .....Page 11
12. Accessing “Param” settings .....Page 11
13. Configuring “Param” settings .....Page 12
14. Click on “OK” button .....Page 13
15. Open up “View” list .....Page 13
16. Select “Hide” option .....Page 14
17. Exiting “DataWedge” configuration .....Page 14

## **Solution for Configuration of the IP Address and Stock take procedure for PDA palm computer:**

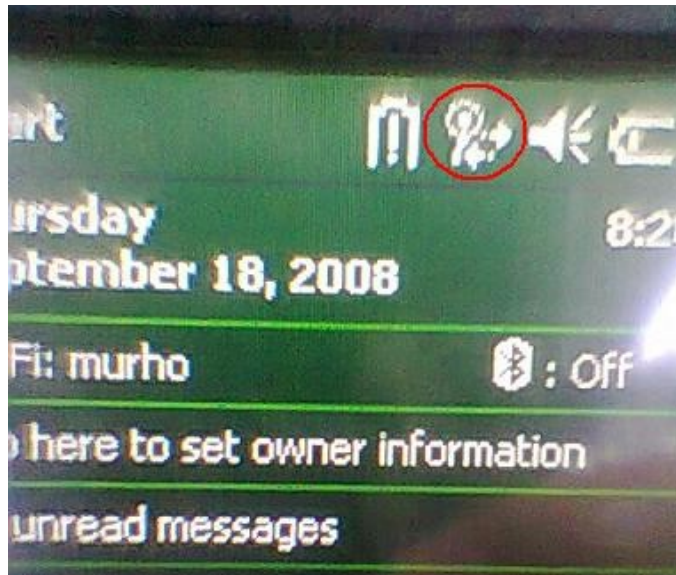
18. Accessing “TRACKNSCAN” section	Page 15
19. Accessing “TRACKNSCAN” system settings	Page 16
20. Inputting IP Address and Port	Page 17
21. Display of success message	Page 18
22. Accessing of “TRACKNSCAN LOGIN” section	Page 19
23. Accessing “IN STORE” section from “Main Menu”	Page 20
24. Accessing “STOCK TAKE” Section	Page 20
25. Selecting of outlet's Branch Code	Page 21
26. Click onto “Product #” field	Page 21
27. Scanning of Products' Bar Code	Page 22
28. Pressing of “ENT” button on PDA Computer Key Pad	Page 22
29. Keying in Quantity using Stock Take	Page 23
30. Repeating Stock Take Procedure	Page 23
31. Technical Support	Page 23

## Solution for Configuration of Wireless Settings for PDA palm computer.

This section would teach you on how to configure the wireless settings for the PDA palm computer.

1. Click on the “Wireless Network” Icon on the top right corner of the screen of your PDA.

Click on the “Wireless Network” Icon as shown below.



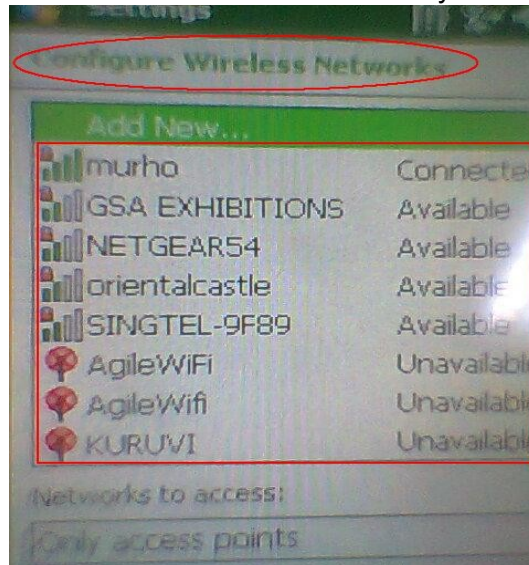
2. After you have clicked on the “Wireless Network” icon, you will be directed to the “network options” screen. Click on the “Wi-Fi” icon as displayed on the screen.

Click on the “Wi-Fi” icon as shown below.



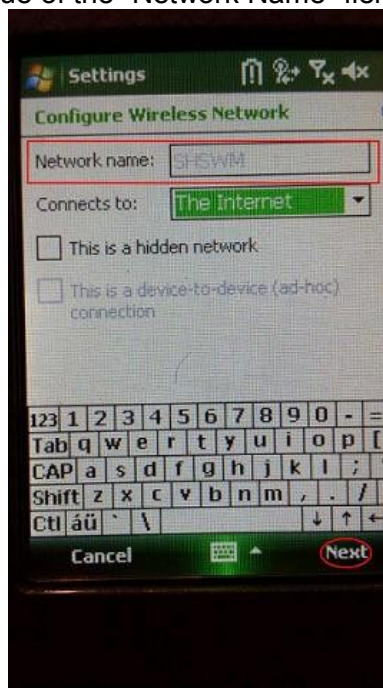
3. After you have clicked onto the “Wi-Fi” icon, a list of Wireless Network connections will be displayed on the “Configure Wireless Networks” screen. Click onto the outlet’s wireless network.

Select your outlet’s wireless network as shown on your list as shown below.



4. After selecting the outlet’s wireless network, you will be directed to the wireless settings screen of your outlet’s network. Ensure that the input value of the “Network Name” field is as provided to you for your outlet. When you have finished checking the “Network Name” field, Click on the “Next” button.

Check that the input value of the “Network Name” field is as provided to you.



5. After you have clicked on the “Next” button, you would be directed to key in the outlet's wireless network connection password in the “Network key” field as provided to you. After you finished keying the outlet's network password, proceed to click on the “Next” button which will direct you to the next screen which will display the success message that indicates the completion for the configuration of the Network Authentication.

Key in the outlet's wireless password into the “Network key” field.



## Solution for Configuration of the DataWedge Settings for PDA palm computer.

This section would teach you on how to configure the DataWedge settings for the PDA palm computer.

6. On your screen of your PDA Computer, click on the “Start” button on the top left corner of the screen. After which a drop-down list will be displayed, click on “Programs” option.

Click on the “Start” button and then the “Programs” option as shown below.



7. After you have selected the “Programs” option, click on the “File Explorer” icon on the “Programs” screen.

Click on the “File Explorer” icon as shown below.





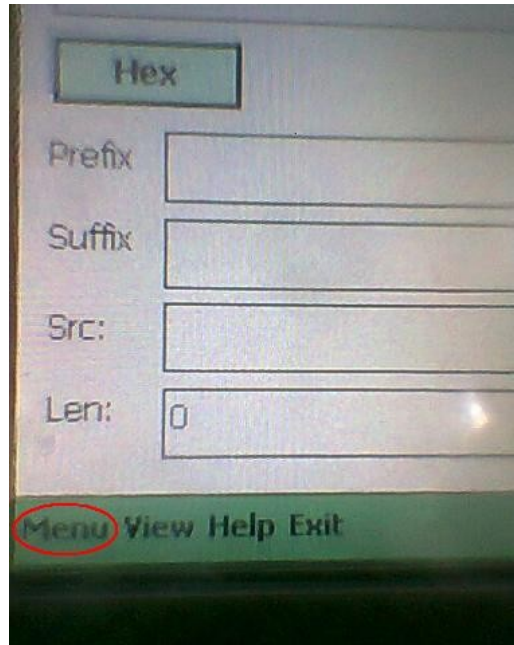
8. After you have clicked on the “File Explorer” icon, click on the “windows” drop-down button and then the “DataWedge” option from the drop-down list.

Click on the “Windows” drop-down button and then the “DataWedge” option from the list.



9. After you have clicked on the “DataWedge” option, click on “Menu” on the bottom left of the “DataWedge” screen.

Click on the Menu button as shown below



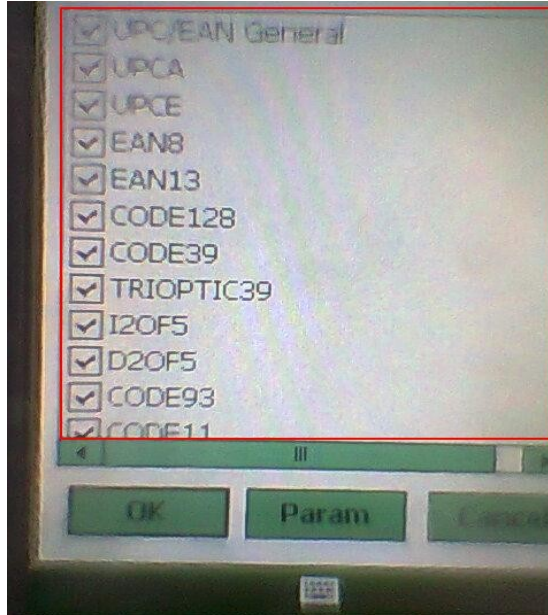
10. After you have clicked on “Menu”, click on the “Decoders” option from the Pop-up list.

Click on the “Decoders” option as shown below.



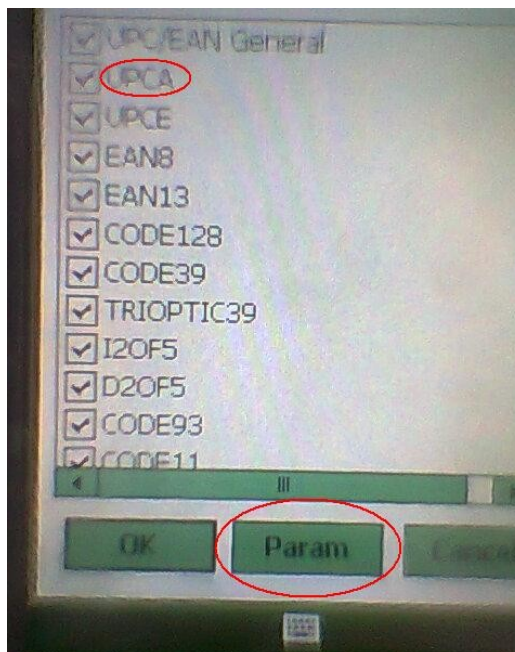
11. After you have clicked on the “Decoders” option, Ensure that all the codes displayed on the “Decoders” screen are checked.

Ensure that all codes on the “Decoders” screen are checked.



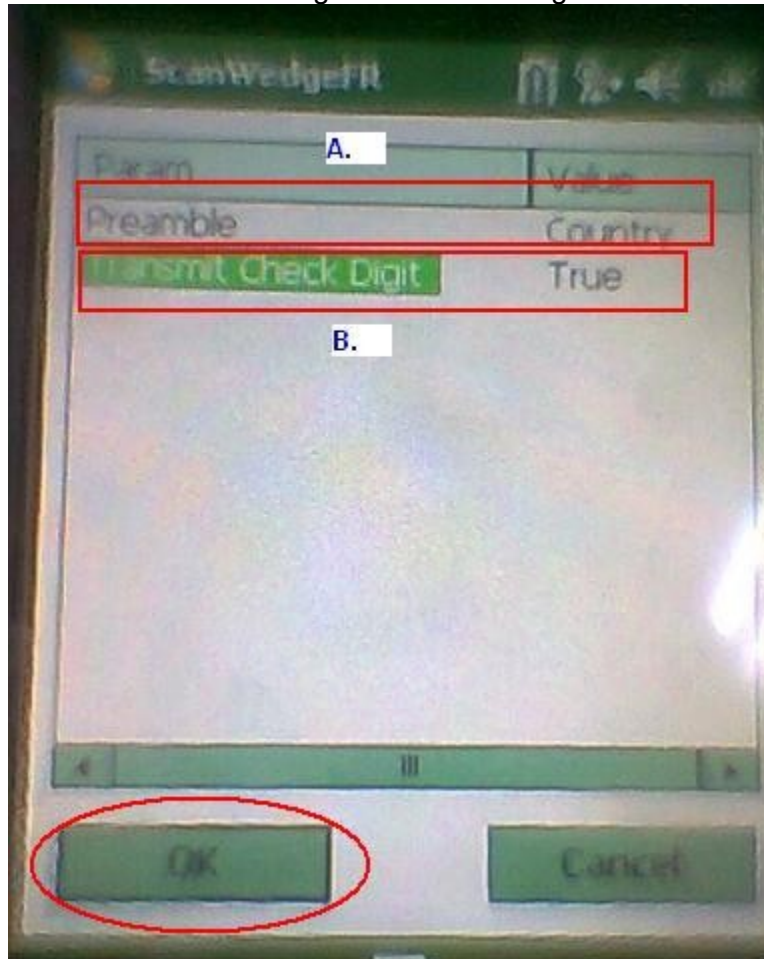
12. After checking that every code is checked, select the code “UPCA” and click on the “Param” button.

Select the code”UPCA” and then click on the “Param” button as shown below.



13. After you have clicked on the “Param” button, you will be directed to “ScanWedgeFR” screen. Click on the “Preamble” and “Transmit Check Digit” shown under the “Param” column to change their input data under the “Value” column as per other existing PDA Computers' settings.

Click on “Preamble” and “Transmit Check Digit” values to change the data under the “Value” column.



### **ScanWedgeFR**

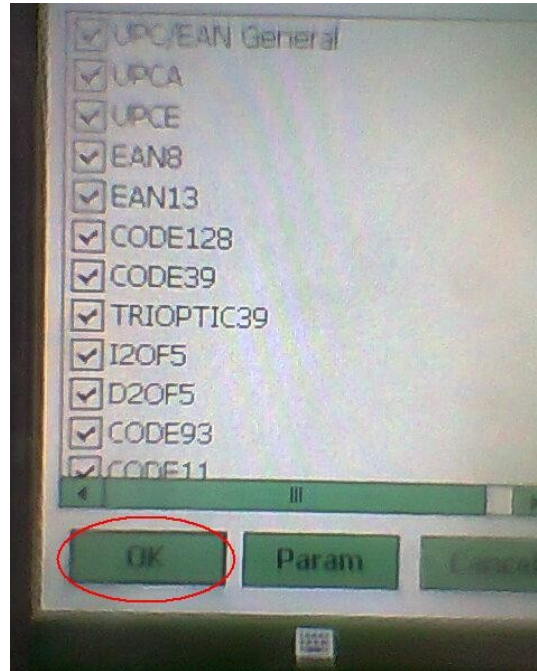
A) Preamble - Click on “Preamble” to change the value between country/system/none.

B) Transmit Check Digit - Click on “Transmit Check Digit” to change the value between True/False.

After the settings for both “Preamble” and “Transmit Check Digit” are done, click on the “OK” button.

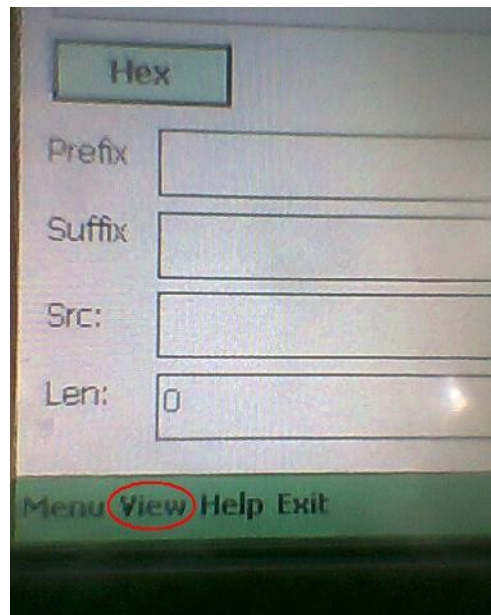
14. After you have clicked on the “OK” button, you will be directed back to the “Decoders” screen. Click on the “OK” button at the bottom left of the screen.

Click on the “OK button as shown below.



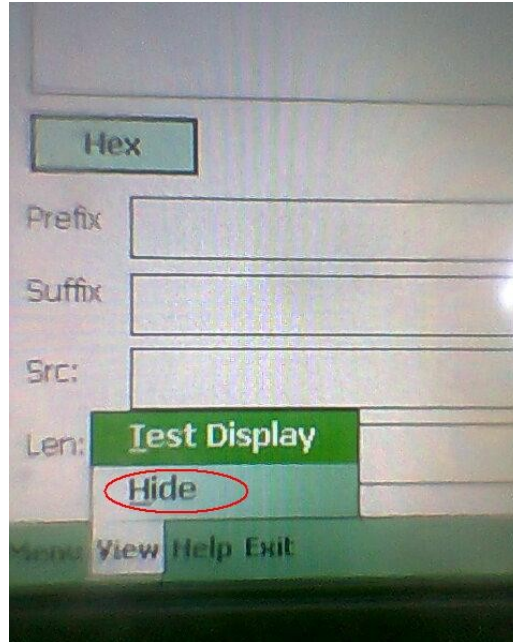
15. When you have clicked on the “OK” button, you will be directed back to the “DataWedge” screen. Next, click on “View”

Click on “View” as shown below.



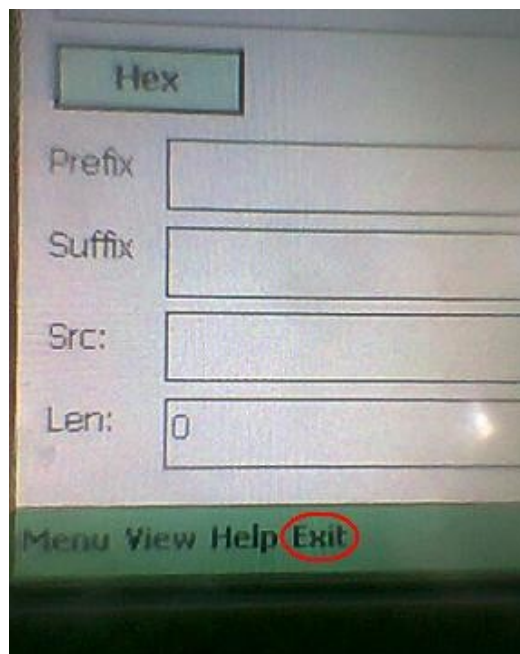
16. After you have clicked on "View", click on the "Hide" option from the Pop-up list.

Click on "Hide" as shown below.



17. After you have clicked on "Hide" option, click on "Exit" at the bottom middle of the screen to finish the Wireless networking configuration.

Click on "Exit" as shown below.



## Solution for Configuration of the IP Address and Stock take procedure for PDA palm computer.

This section would teach you on how to configure the IP address settings and the stock take procedure for the PDA palm computer.

18. On the screen of the PDA palm computer, click on the “Start” button followed by the “TRACKNSCAN” option from the drop-down list.

Click on the “Start” button followed by the “TRACKNSCAN” option as shown below.



19. after you have clicked on the “TRACKNSCAN” option, you will be directed to the “TRACK N SCAN LOGIN” screen. Click on the “Settings” link at the bottom of the “TRACK N SCAN LOGIN” screen.

Click on Settings as shown below.





20. After you have clicked on the “Settings” link, fill in the “IP Address” and “Port” fields on the IP Address Settings screen.

Fill in the “IP Address” and “Port” fields as shown below.



### **IP Address Settings**

A) IP Address - Type in “**203.169.115.22**” for the “IP Address” field.

B) Port – Type in “**8080**” for the “Port” field.

When all the necessary fields have been filled, click on the “Apply” button at the bottom right of the screen as shown above.

21. After you have clicked on the “Apply” button, a message “URL Configured Successfully” will be displayed. Next, click on the “OK” button below the message.

Click on the “OK” button below the message.



22. After you have clicked on the “OK” button, you will be directed back to the “TRACK N SCAN LOGIN” screen. Fill in the necessary fields namely the “Company ID”, “User ID” and “ Password” fields with your Log-in details.

Fill in your login details in the fields as shown below.



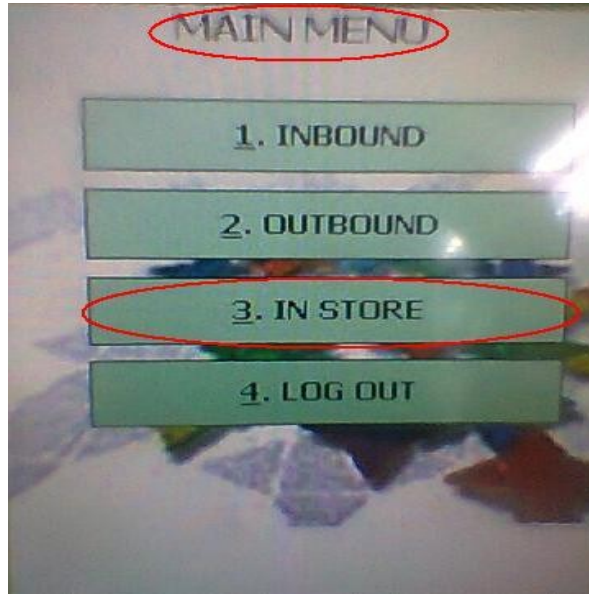
### **TRACK N SCAN LOGIN**

- 1) Company ID - Type in “spechut” into the field
- 2) User ID - Type in your “User ID” as provided to you.
- 3) Password – Type in your own password or the password provided to you.

After you have filled in all the necessary fields mentioned above, click on the “Login” button to proceed.

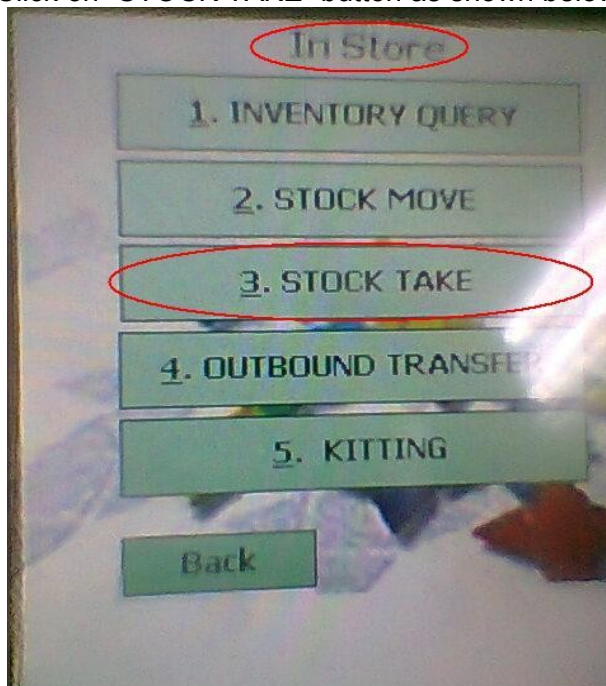
23. After you have logged in, you will be directed to a “MAIN MENU” screen. Next, click on the “IN STORE” button displayed on the “MAIN MENU” screen.

Click on the “IN STORE” button as shown below.



24. After clicking on the “IN STORE” button, click on “STOCK TAKE” button on the “In Store” screen.

Click on “STOCK TAKE” button as shown below.



25. After clicking on the “STOCK TAKE” button, Fill in the “Loc” field by clicking on the pop-up window on the right side of the field and clicking on your respective outlet's Branch Code on the “STOCK TAKE” screen. ( E.g SWM, BJP, EAM )

Fill in the “Loc” field with your outlet's Branch Code as shown below.



26. After you have filled up the “Loc” field, click onto the “Product #” field.

Click on the “Product #” field as shown below.



27. After clicking on the "Product #" field, press onto the yellow button on the center of the PDA Computer key pad and scan the product's bar code.

Press on the Yellow button as shown below and proceed to scan the product's bar code.



28. After scanning of the product, press on the "ENT" button on the right side of the PDA Computer's key pad.

Press onto the "ENT" as shown below



29. After pressing on the “ENT” button, you will automatically be moved to fill in the “Qty” field. Fill in the quantity that you have counted for each product during the stock take. After you have finished inputting the quantity, click on the “NEXT” or “submit” button.

Fill in the Quantity of each product as shown below in the “Qty” field and then click on the “Next/Submit” button.



30. **REPEAT** from steps **26** to **29** for stock take of each different products.

31. If you are unsure of any of the processes of using the PDA Computer, please contact the Technical Support with the following details:

Person In charge: Andrew Thum  
Contact Number 6643 9687/9723 8762  
Email: [andrew@spectaclehut.com.sg](mailto:andrew@spectaclehut.com.sg)